

How to configure card sharing by internet for Opticum receivers with LAN?

OPTICUM 4100TSCXE

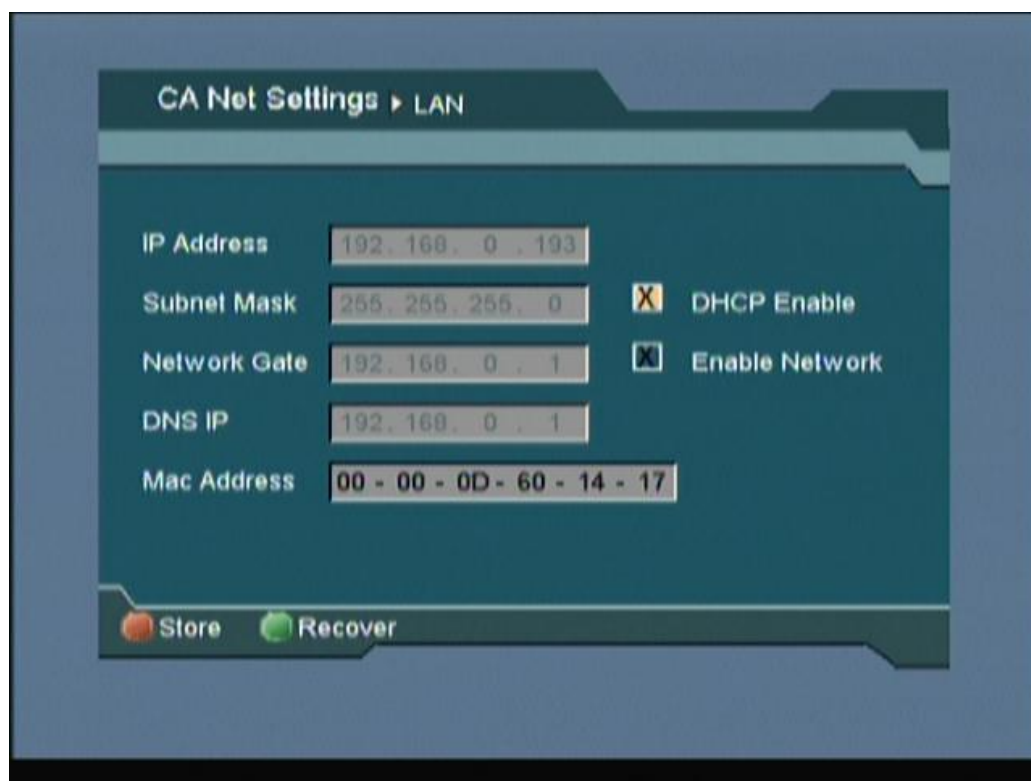
OPTICUM 7100CXE

OPTICUM 7000CXE

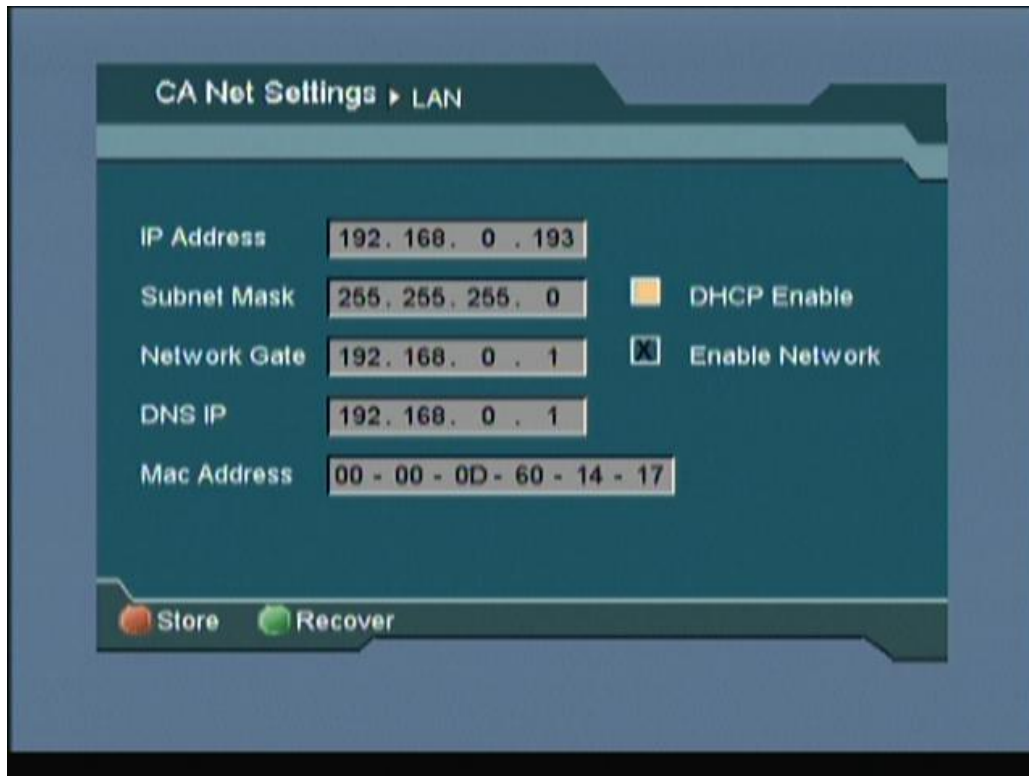
HOW TO MAKE SERVER?

1. establish network in server receiver





If you want to use DHCP, than put X in DHCP Enable field. Address will be automatically set by your router. All options are disabled, you cannot edit it.



If you want to set address manually, remove X from DHCP Enable field.
Than you must put all your settings manually.

MAKE SURE THAT THERE IS ENABLE NETWORK MARKED WITH “X”, otherwise network is disabled.

After finishing setting network parameters or choosing DHCP Enable, you must press STORE button.

2.setting server.

Scan some channels.

Press INFO button and than WHITE color button on remote.

You will see HOMECAMD server setting window.

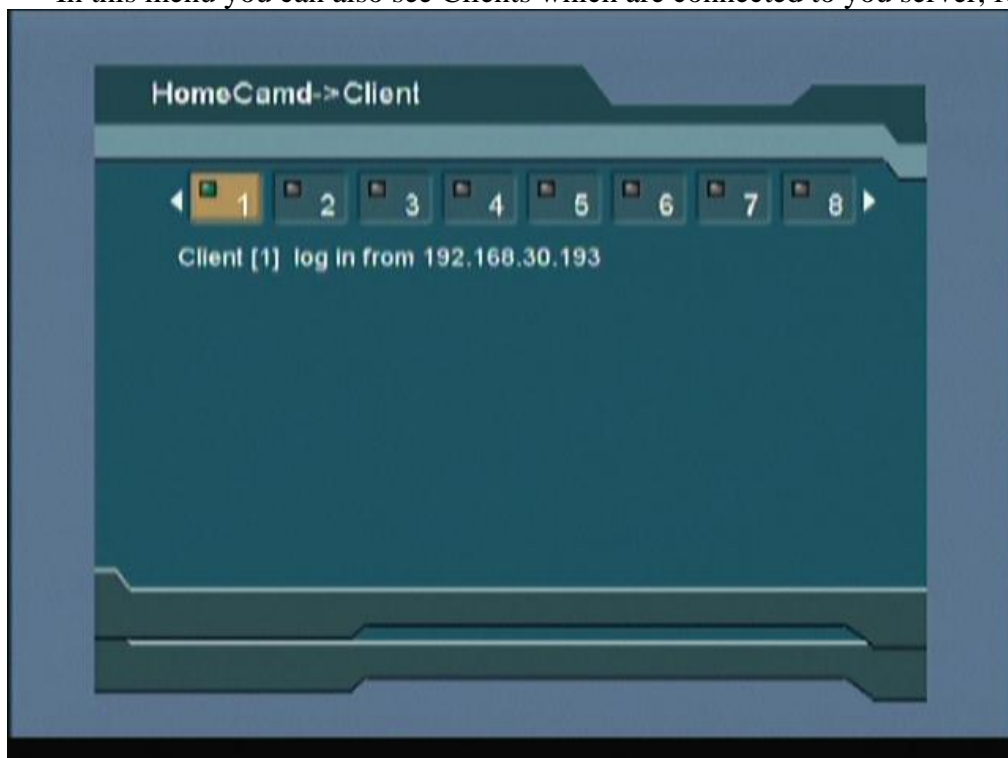


Here you see your receiver IP address, and port on which your server will be running. You can change port setting.

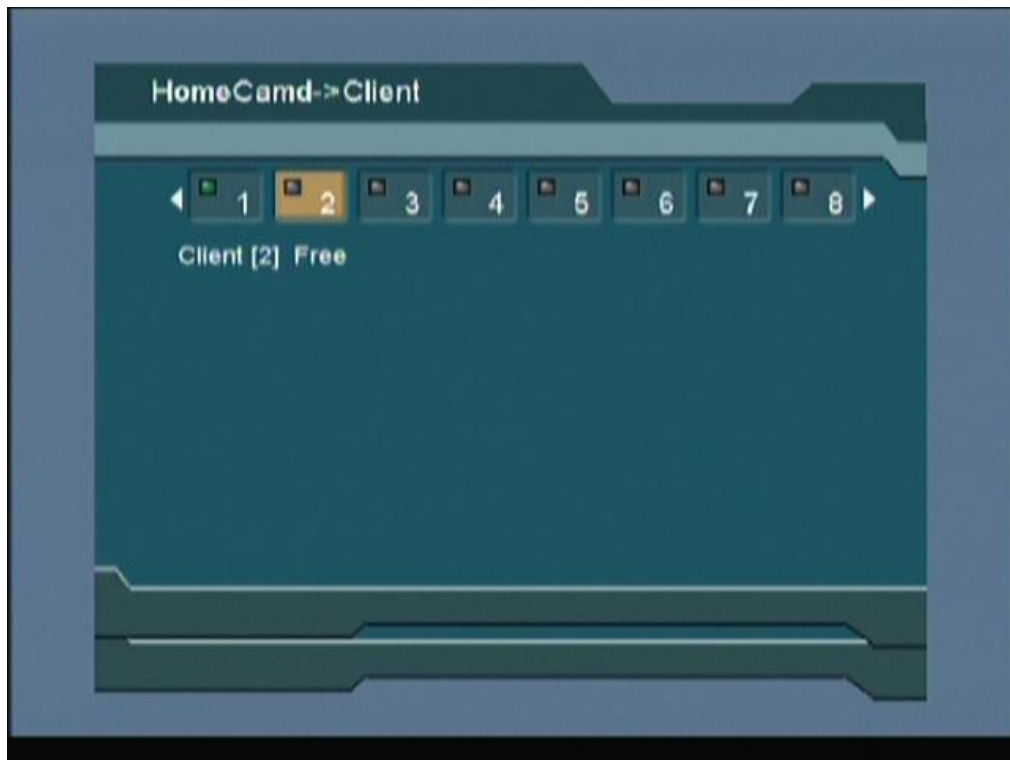
Make sure that field ACTIVE is checked with X, otherwise your server will be disabled. I have no idea what is server CAID, but you don't need to worry about it.

MAKE SURE YOU PRESS RED BUTTON TO **STORE AFTER FINIH.**

In this menu you can also see Clients which are connected to you server, for example:



You see there is client 1 connected to your receiver, and you see his IP.

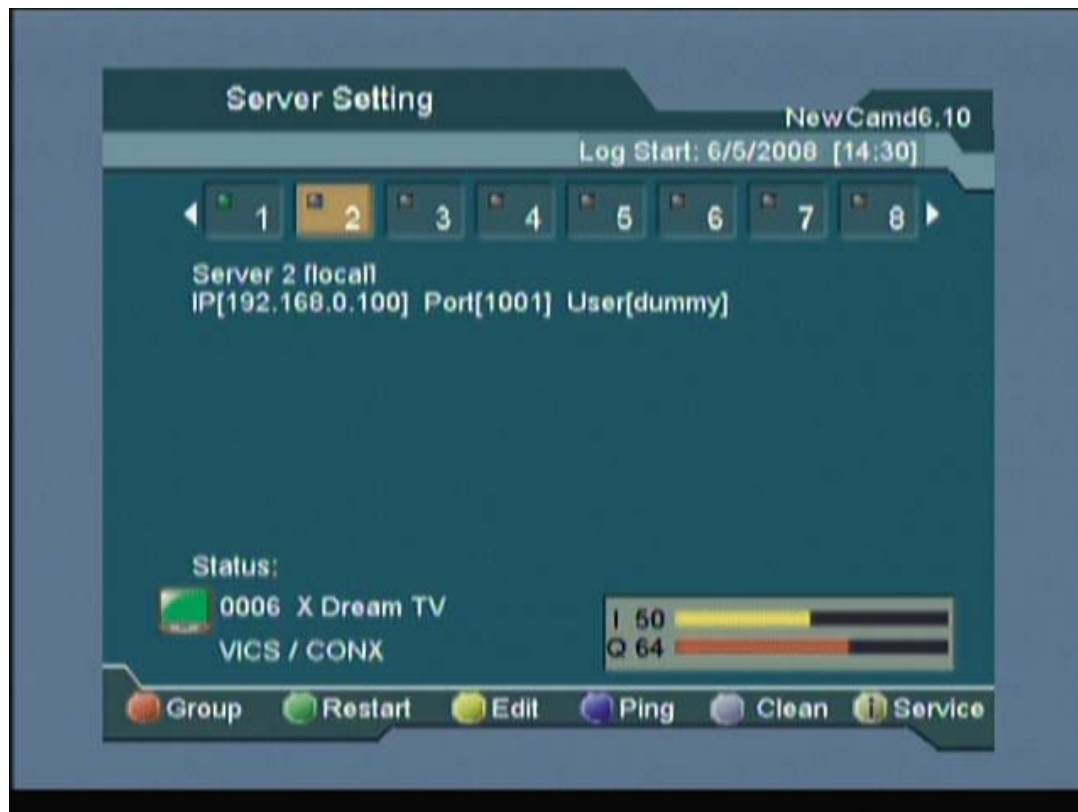


There is no more clients connected here.
You can set max 16 clients.

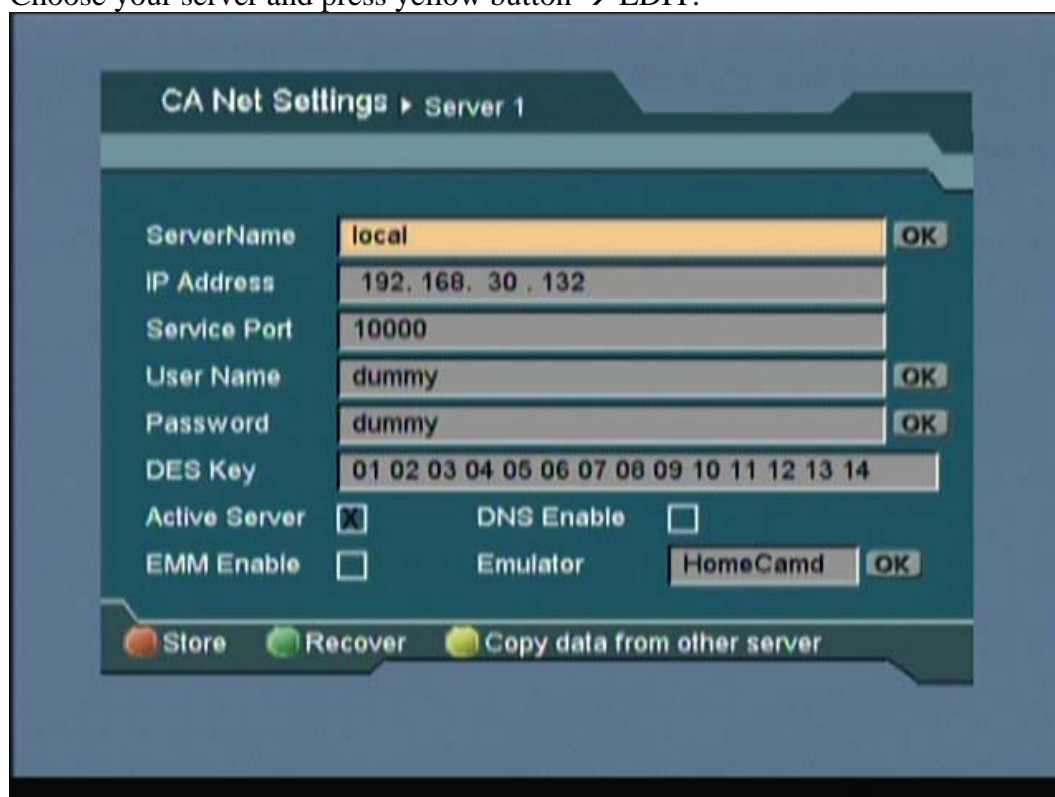
3.setting up clients.

Of course you need first set IP address in clients receivers, same as I described at the beginning.

Than when you will have Ethernet network configured, you must press INFO button and than quickly BLUE button on remote.
You will see this menu:



You can set up to 8 servers the same time.
Choose your server and press yellow button → EDIT:



Service name – no need to change, this is just a name, or if you make DSN enable, than here you normally write address of server (www.)

IP ADDRESS – here you must put your server address. Ask your server owner for this.

SERVICE PORT – you must set the same service port as is set in server, otherwise it is not working. Careful!! Default setting here is 1000, but default setting for server port is 10.000, don't forget to check that port number is the same in server and client

USER NAME – no need to change it

PASSWORD – No need to change it

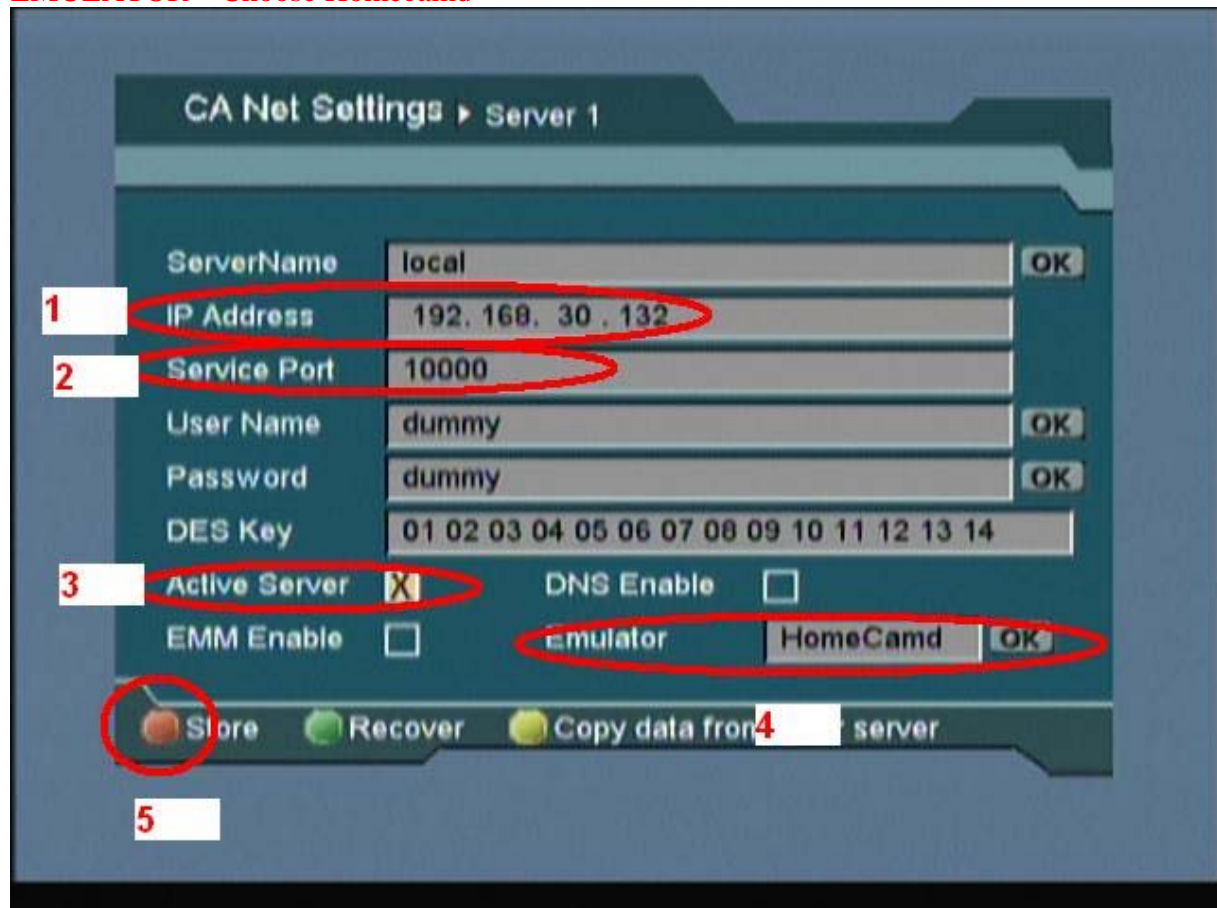
DES KEY – no need to change it.

ACTIVE SERVER – put X here, otherwise server is not active.

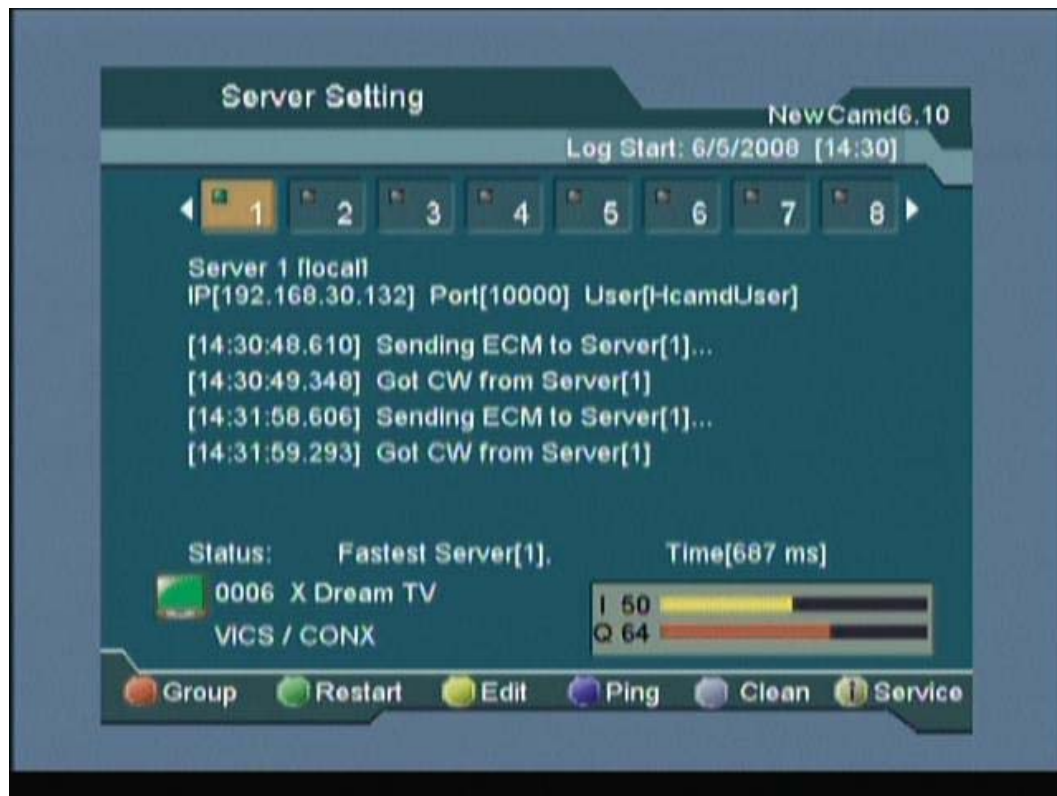
DSN ENABLE – no need to change it.

EMM ENABLE – no need to change it.

EMULATOR – Choose Homecamd



After pressing STORE, you will see the status of your connection. If all ok, you will see here something like this, EXAMPLE:



You see here some communication between server and clients.

YOU CAN BE SERVER FOR ONE CARD AND CLIENT FOR OTHER CARD THE SAME TIME!!!

YOU CAN SET UP TO 8 HOMECAMD CLIENTS!!

ENJOY!

www.globo-opticum.org